

# Special Parish Forum

SAINT MARK'S CATHEDRAL

OCTOBER 16, 2016

# Living Stones Campaign Prayer (Don Lewis)

Lord God, creator of the Universe,  
We offer thanks for the blessings of St. Mark's Cathedral,  
enlightening Puget Sound and beyond for over 100 years.  
Your holy spirit flowing through it, yet, remaining within as well.

Help us, O God, to reconstruct this cathedral space that it may best enhance this spiritual  
beacon.

Fill us with the generosity, vision, and courage to restore this monument as a manifestation of  
your glory.

Lord God, Open our hearts to this Prayer of Action for all concerned.

May we stretch our imaginations and stewardship  
in the name of our Lord, Jesus Christ. AMEN

# Exciting Updates to Share

- ▶ Lots of work has been going on!
- ▶ Living Stones Capital Campaign Update & Projections (John Hoerster)
- ▶ Vestry Decision Points for Scope and Funding Sources (Lynne Markova)
- ▶ Construction Scope & Timeline (Steve Thomason & Walter Stuteville)
- ▶ Q&A

# Living Stones Capital Campaign

- ▶ Current Status
  - ▶ Parish Campaign (2014) \$4,401,735
  - ▶ Vestry Designated Funds (2015) \$ 734,733
  - ▶ McCaw Garrison Bequest (2015) \$ 73,800
  - ▶ Major Gifts Phase (2016) \$2,013,541 (includes Matching Challenge)
- ▶ Total Pledges and Gifts in Hand \$7,223,809
  
- ▶ Additional Work on Major Gifts (ongoing)
- ▶ Diocesan Phase (early 2017)
- ▶ Anticipated Additional Funding from Campaigns ~\$1.5-2.5M



# Vestry Decision Points (10/15/2016)

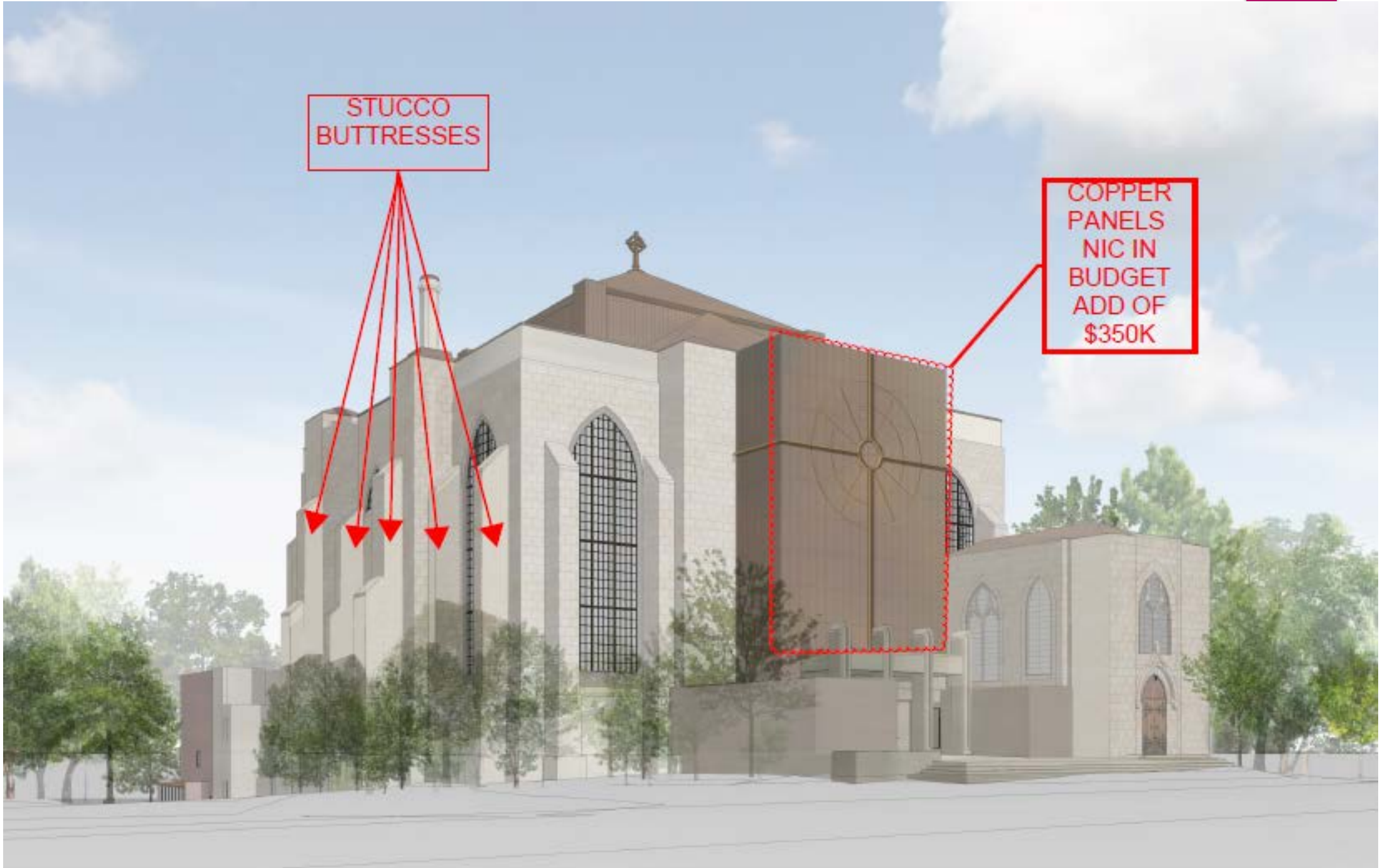
- ▶ Alongside capital campaign, good work by Design Cmte & Parish Leadership
  - ▶ Retained Spectrum Development as Owner's Rep (2015)
  - ▶ Design Work with Olson Kundig (completed June 2016)
  - ▶ Permits submitted (awaiting final approval from city any day now)
  - ▶ Retained Turner Construction as General Contractor (July 2016)
  - ▶ Value Engineering to refine scope and timeline
  - ▶ Exec. Cmte, Chancellor, Treasurer, Design Cmte Chairs make recommendation to Vestry (Sept 2016)
  - ▶ Vestry authorizes two important decision points at its workday (10/16/2016)
    - ▶ **Scope of Construction not to exceed \$10.5M**
    - ▶ **Direct Parish Leadership to secure long-term loan not to exceed \$2M to cover difference between CC and \$10.5M**

# Scope of Construction (Overview)

- ▶ Limestone Cladding of North, South and East Facades
  - ▶ Buttresses will have stucco to match the stone on walls)
- ▶ New Windows in Nave (excluding west wall windows replaced in 1990s)
- ▶ New Elevator Annex
- ▶ Cross on East Façade thematically connected to reredos in nave
- ▶ Thomsen Chapel painted to match rest of building
- ▶ East Façade of Brick will have stucco in lieu of copper panels
- ▶ Repair of Entry Portico and replacement of east entry stairs and patio
- ▶ New landscaping around cathedral

STUCCO  
BUTTRESSES

COPPER  
PANELS  
NIC IN  
BUDGET  
ADD OF  
\$350K



# Timeline of Construction

- ▶ 4<sup>th</sup> Quarter 2017      Pre-Construction Work w/Turner and Spectrum
- ▶ 1<sup>st</sup> Quarter 2017      Some preliminary work (tree removal, elevator)
- ▶ April 15, 2017      Easter Day
- ▶ April 16, 2017      Break Ground, scaffolding around windows in & out)
- ▶ May 13, 2017      Cathedral Day (ceremonial ground-breaking)
- ▶ November 30, 2017      Construction Complete
- ▶ December 24, 2017      Christmas Eve Services





# Questions, Answers, Conversation